



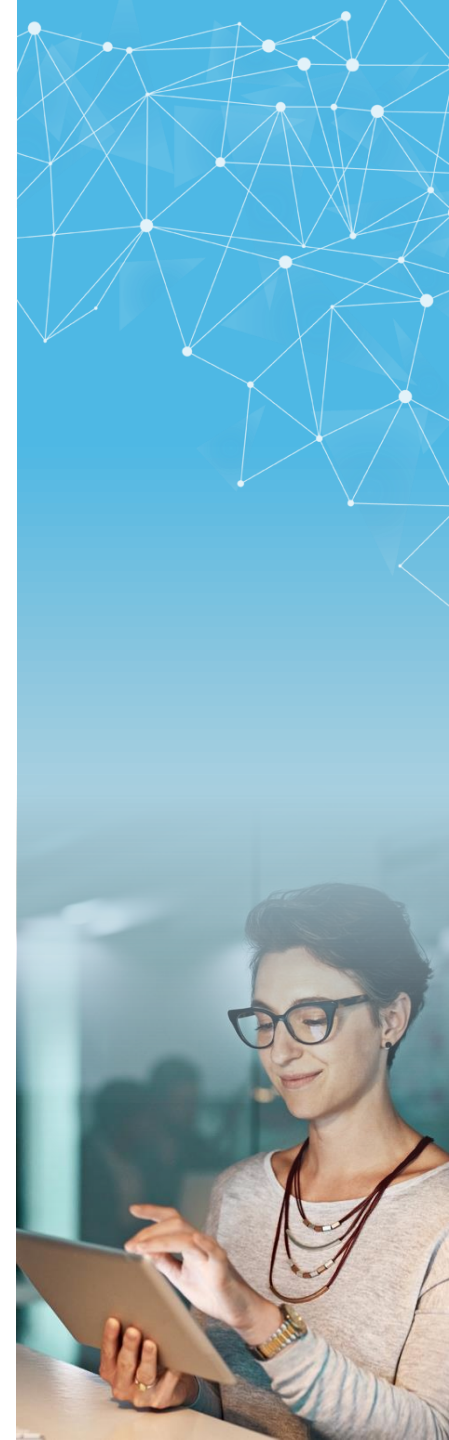
Collaborative projects with
NSERC Alliance



Mitacs and NSERC: working together

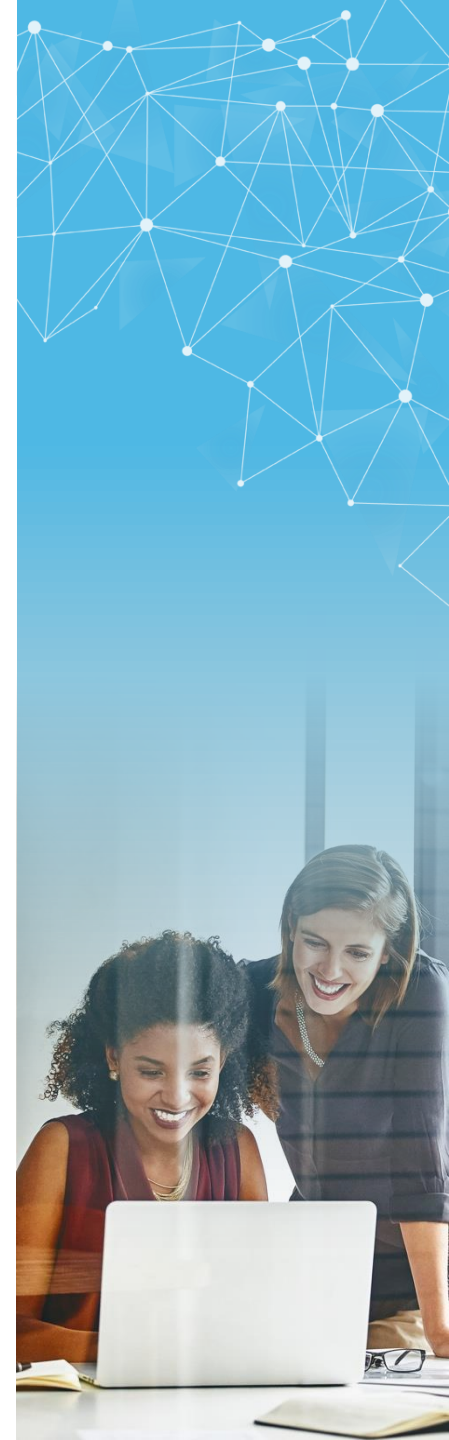


Together, **Mitacs** and the **Natural Sciences and Engineering Research Council of Canada** are working to **develop** and **co-fund collaborative projects** between post-secondary institutions (PSIs) and partner organizations.



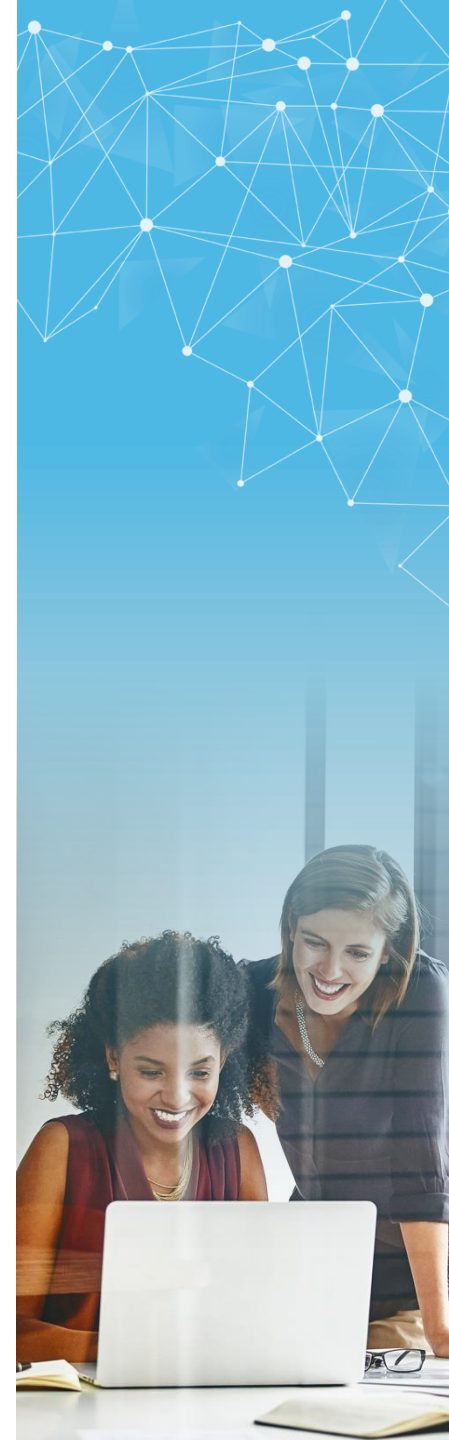
The details

- Available for **Alliance Option I** only
- Applicants must meet **both** NSERC Alliance and Mitacs Accelerate eligibility and merit criteria
- Applies to **new** submissions only

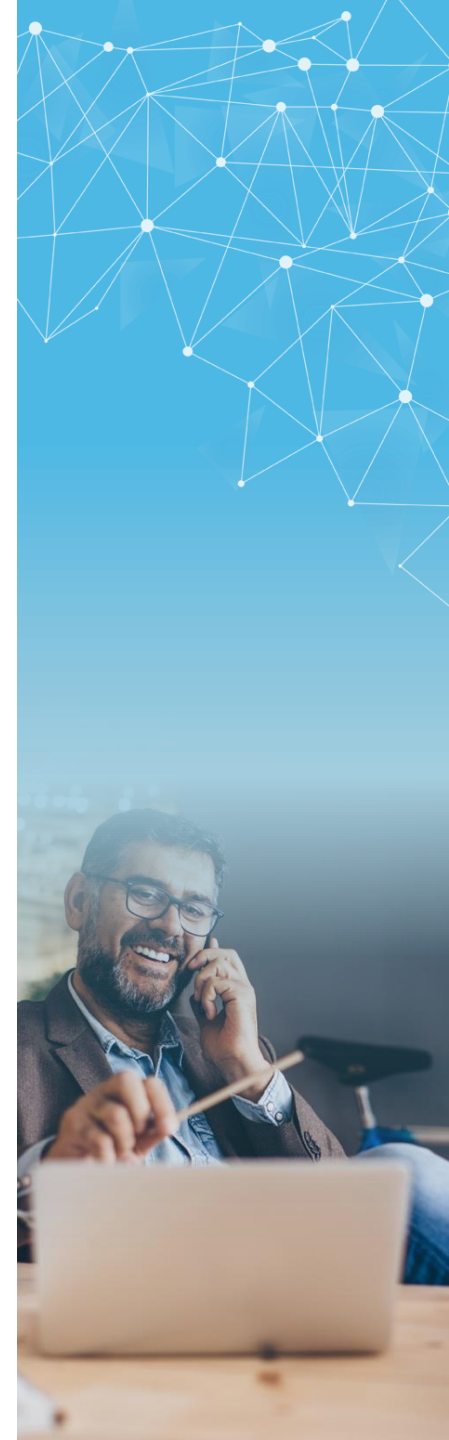


The benefits

- Industry funds recognized towards the global budget of joint applications
- Boosts research and innovation by leveraging the resources and funding of both organizations
- Supports innovation-focused, work-integrated learning for university students, graduate students, and post-doctoral fellows
- Reduces administrative burden on applicants: only one joint application is required



Bridging the gap



NSERC Alliance Grants (Option I)

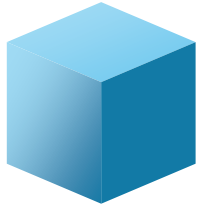
Discipline	<ul style="list-style-type: none">• Supports natural sciences and engineering
Program Goals	<ul style="list-style-type: none">• Supports strong, complementary, collaborative teams
Value	<ul style="list-style-type: none">• \$20K-\$1M/year, over 1-5 years
Cost-Sharing	<ul style="list-style-type: none">• 1:1 for large organizations• 2:1 for SMEs or cross-sector partnerships• Calculated based on the sum of cash contributions from all recognized partners
Partner Organizations	<ul style="list-style-type: none">• Can be from private, public, or NFP sector• At least 1 must be recognized for cost-sharing• Must be involved in the project and contribute to its success• Must have the ability to exploit the research results and achieve desired outcomes



Collaborative projects with
NSERC Alliance



Mitacs Accelerate

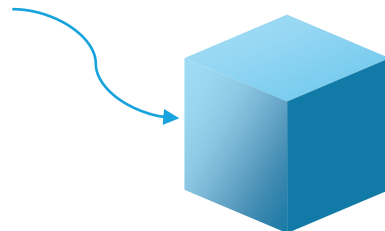


An intern spends a minimum of 4-to-6 months — or **one unit** — on a project

The intern spends a **minimum of 25% of their time** (and up to a maximum of 75%) at the industry partner's site

A single unit

- 1 intern
- 1 professor
- 1 industry partner
- 1 four-six month project



\$15,000

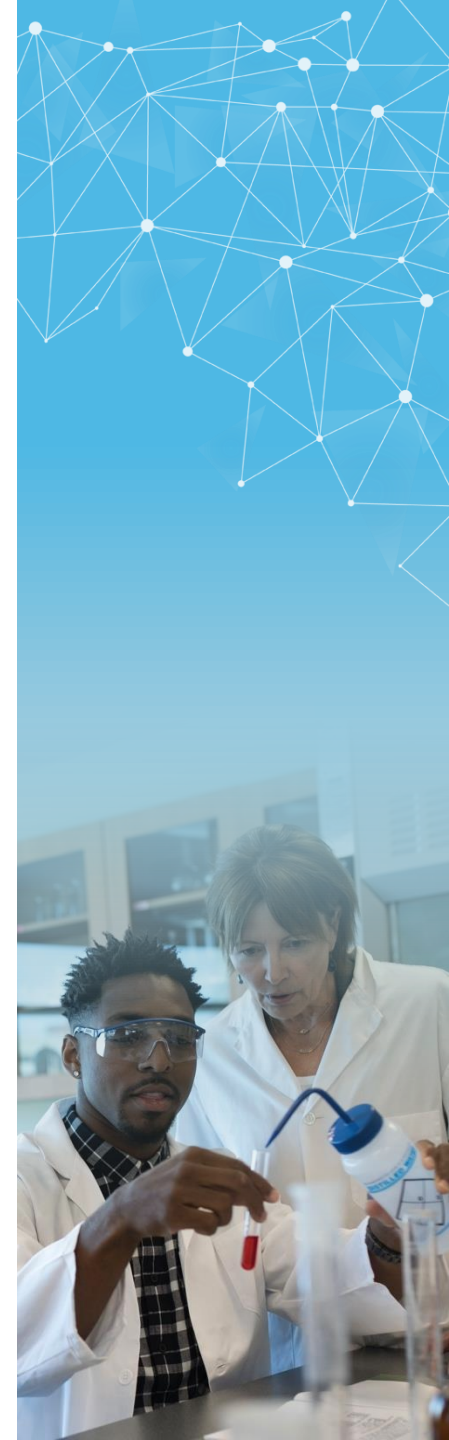
\$7,500 – Industry
\$7,500 – Mitacs

\$10,000

Minimum Stipend

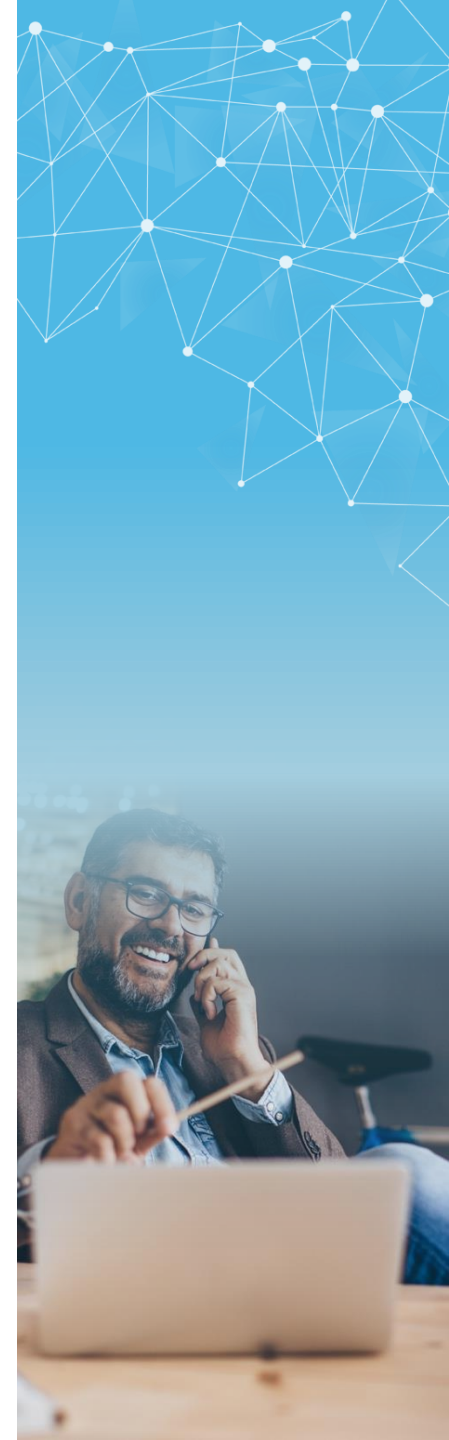
\$5,000

Project support



Mitacs— Accelerate

- Researchers can do **multiple** 4-to-6-month units
- MSc students up to \$60,000 (up to 2 years)
PhD students up to \$120,000 (up to 4 years),
PDFs up to \$135,000 (up to 3 years)
- Add multiple partner organizations & researchers
- Tackle more complex projects



Alliance-Accelerate Joint Initiative

Discipline	<ul style="list-style-type: none">• Supports natural sciences and engineering.
Program Goals	<ul style="list-style-type: none">• Support collaborative research projects of benefit to Canada• Translate/mobilizes knowledge• Talent development and training• EDI
Value	<ul style="list-style-type: none">• NSERC: \$20K(min) - \$1M/year over 5 years• Mitacs: additional min \$7,333 for HQP training
Partner Contribution	<ul style="list-style-type: none">• Min \$20,000 for large organizations• Min \$10,000 for SMEs or cross-sector partners• Partner \$ recognized towards the global budget of joint applications
Intake	<ul style="list-style-type: none">• Rolling
Decision Timeline	<ul style="list-style-type: none">• 4 – 16 weeks per standard Alliance timelines (dependent on size of project)

Alliance-Accelerate Joint Initiative

Academic Eligibility	<ul style="list-style-type: none">• University PIs• Undergrad*, graduate students, PDFs (standard Accelerate guidelines)
Partner Eligibility	<ul style="list-style-type: none">• Public*, Private, NFP (NFP's must be approved and operating in Canada)• Carry out R&D and/or produce goods or provide services in Canada• Generate revenue from sales or have significant private-sector investment
Eligible Expenses	<ul style="list-style-type: none">• Normal expenses through NSERC Alliance: HQP, equipment, project management for large projects
Review Criteria	<ul style="list-style-type: none">• <u>Alliance Merit Indicators</u>• <u>Mitacs adjudication criteria</u>
Success Rate	<ul style="list-style-type: none">• TBD

Distribution of Funds (Standalone)

Accelerate standalone



Alliance standalone (1:1)

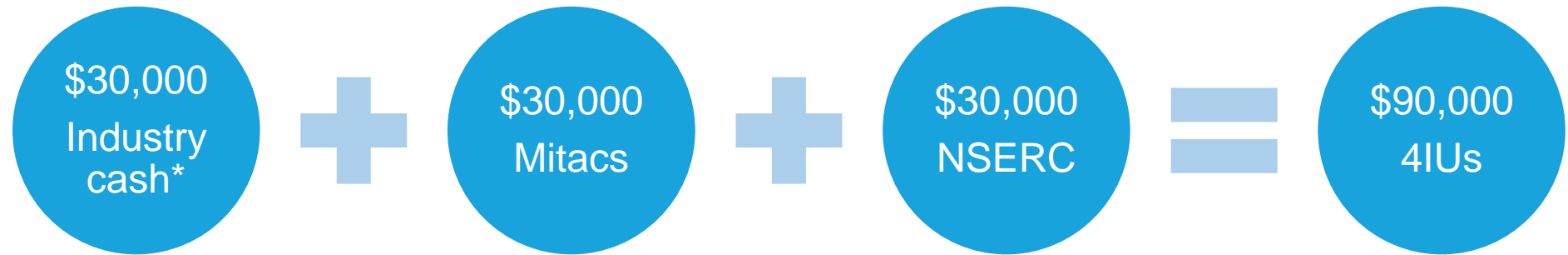


Alliance standalone (2:1)

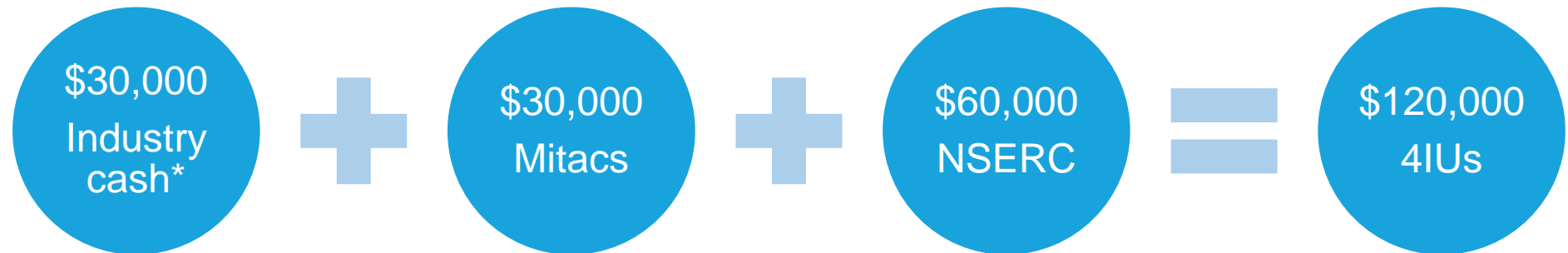


Distribution of Funds (Joint Initiative)

NSERC-Mitacs JI (1:1)

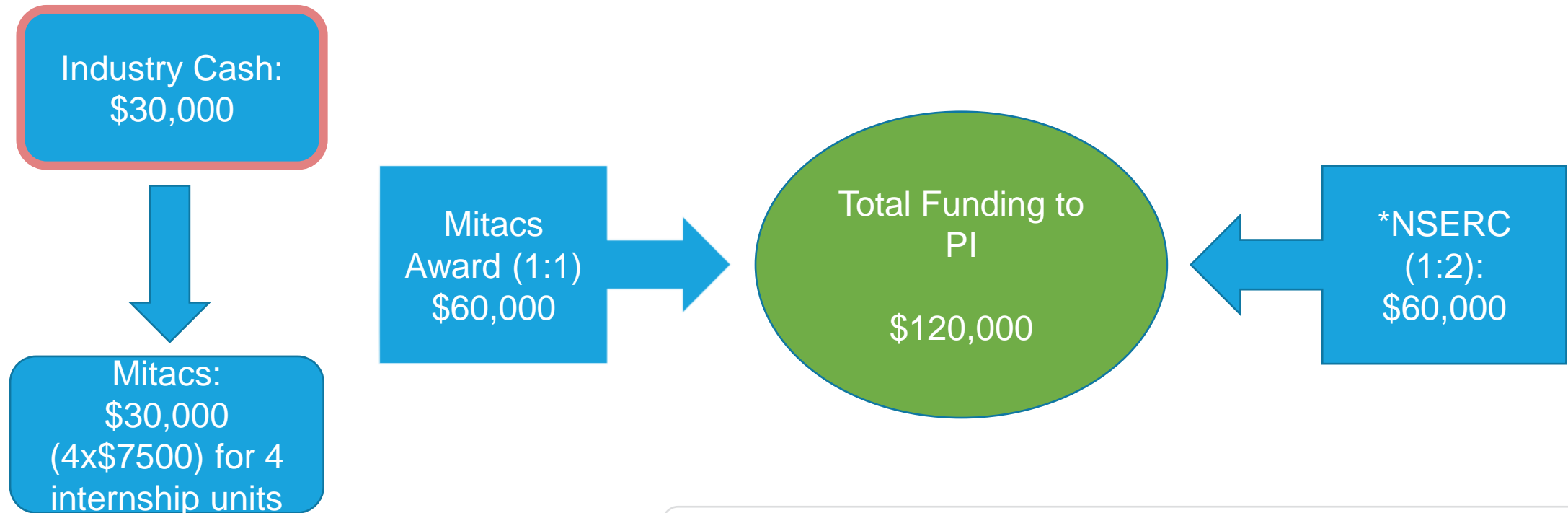


NSERC-Mitacs JI (2:1)



Example - Distribution of Funds in the Joint Initiative

Applicant requests \$30,000/year from NSERC (1:2) and requests 4 internship units through Accelerate



**All of the HQP training of the joint grant should not be delivered solely through Mitacs. A portion of the NSERC grant should also be used for HQP and PIs should provide a justification on the added value of the enhanced Mitacs training for interns*

Development and Submission Procedures

Develop

- Mitacs representative works with PI to finalize the Mitacs supplemental form
- PI simultaneously works with research facilitator or RASI staff to complete NSERC Alliance application

Sign-off

- Obtain RASI signature on Mitacs supplemental form
- PI uploads signed Mitacs form to “other documents” section of NSERC Alliance application

Submit

- Once Alliance application is complete and Mitacs supplemental form uploaded, PI submits the full application to NSERC
- PI sends Mitacs supplemental documents (budget, CVs etc) to Mitacs representative to be submitted to Mitacs simultaneously

Review

- Standard Alliance review process

Award

- Projects can start any time once approved per normal Accelerate criteria

Thank you for your interest *(Please stay for the Q&A!)*



Zsuzsa Papp - zpapp@mitacs.ca



306 491-2769



@MitacsCanada



[linkedin.com/company/mitacs](https://www.linkedin.com/company/mitacs)

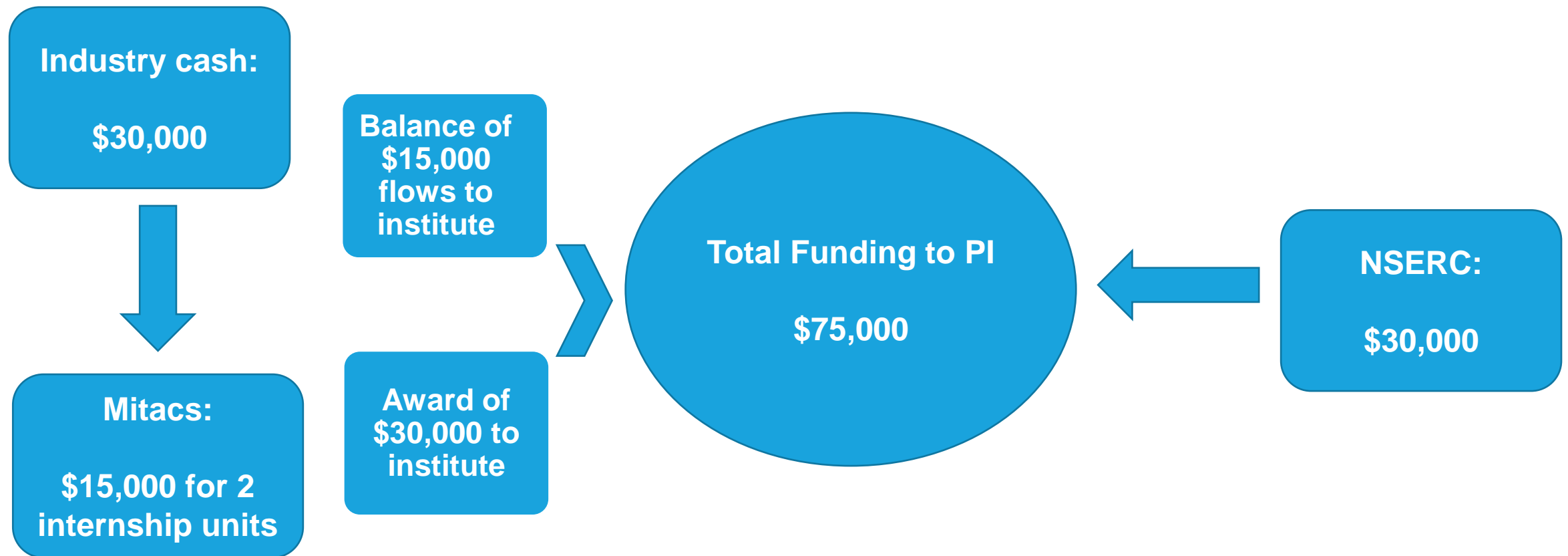
Danielle Ellis (UofS OVPR)
danielle.ellis@usask.ca

Alliance Grants (NSERC)
Alliance@nserc-crsng.gc.ca
613-995-1111

The Mitacs logo, featuring the word "Mitacs" in a bold, italicized, sans-serif font. The background of the slide features a blue overlay with a network of white dots and lines, and a faint image of a group of people smiling.

Distribution of Funds

Example 2: Applicant requests \$30,000/year from NSERC and requests 2IUs through Accelerate



Example 2 - Distribution of Funds in the Joint Initiative (*Accelerate cluster funding model)

Applicant requests \$72,000 from NSERC (2:1) and requests 6 internship units (IU) through Accelerate cluster model funding for enhanced HQP.

